

Eris™ Series E3.5

High-Definition Near Field Studio Monitors

Owner's Manual

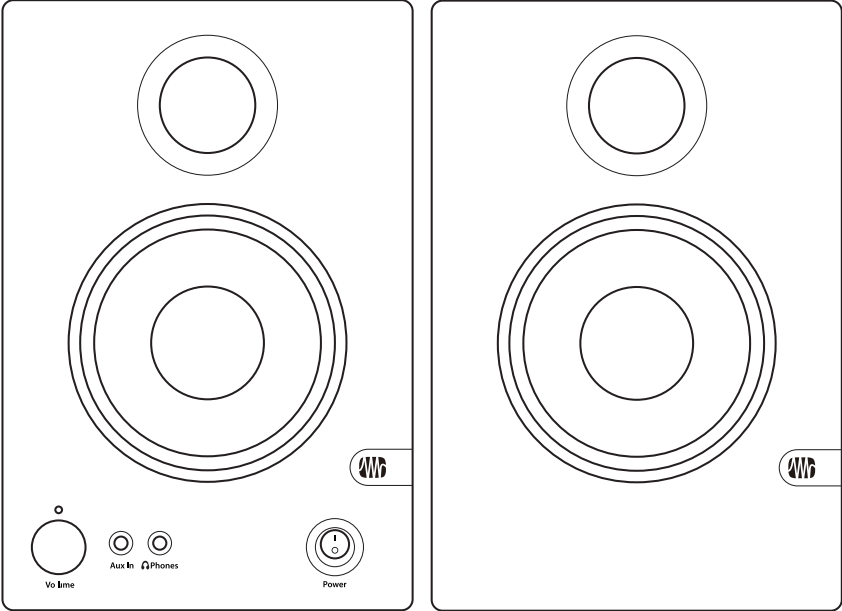


Table of Contents

1. Overview — 1

- 1.1. Introduction — 1
- 1.2. Summary of Eris E3.5 Features — 2
- 1.3. What's in the Box — 3

2. Hookup — 4

- 2.1. Rear Panel Connections and Controls — 4
 - 2.1.1. Inputs (Active Speaker) — 4
 - 2.1.2. Power (Active Speaker) — 5
 - 2.1.3. Acoustic Tuning Controls (Active Speaker) — 5
 - 2.1.4. Speaker connections — 6

- 2.2. Active Speaker Front Panel — 6
- 2.3. Hookup Diagram — 7

3.0 Tutorials — 8

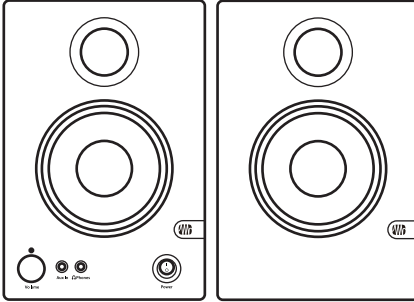
- 3.1. Monitor Placement — 8
- 3.2. Level Setting — 9
- 3.3. Equalizer Setting Suggestions — 9

4. Resources — 10

- 4.1. Technical Specifications — 10
- 4.2. Troubleshooting — 11
- 4.3. Warranty Information — 11

1. Overview

1.1. Introduction



Thank you for purchasing the PreSonus® Eris™ E3.5 studio monitors. Eris E3.5 active near-field monitors offer excellent performance at a reasonable price for budget-conscious personal studios, with features normally reserved for more expensive monitors.

PreSonus Audio Electronics is committed to constant product improvement, and we value your suggestions highly.

We believe the best way to achieve our goal is by listening to the real experts: our valued customers. We appreciate the support you have shown us through the purchase of this product and are confident that you will enjoy your Eris E3.5 studio monitors!

ABOUT THIS MANUAL: *We suggest that you use this manual to familiarize yourself with the features, applications, and connection procedures for your Eris E3.5 monitors before connecting them to the rest of your studio gear. This will help you avoid problems during installation and setup.*

*Throughout this manual you will find **Power User Tips** that can quickly make you an Eris expert. In addition to the Power User Tips, you will find several tutorials that cover monitor placement, as well as setting the input level, EQ, and Acoustic Space controls.*

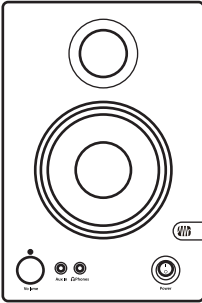
1.2. Summary of Eris E3.5 Features

- 1" (22 mm) silk-dome tweeter
- 3.5" Kevlar woofer
- Peak SPL: 100 dB
- Frequency response: 80 Hz to 20 kHz
- Class A/B amplifier
- Balanced ¼" TRS and unbalanced RCA inputs
- 1/8" headphone output
- 1/8" stereo Auxiliary input
- Front-panel volume control
- Rear bass-reflex port
- High-frequency shelf EQ with ± 6 dB of boost/cut centered at 10 kHz
- Low-frequency shelf EQ with ± 6 dB of boost/cut centered at 100 Hz

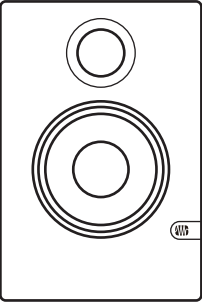
1.3. What's in the Box

In addition to this manual, your Eris E3.5 package contains the following:

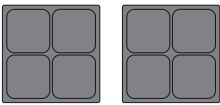
- (1) PreSonus Eris E3.5 active studio monitor



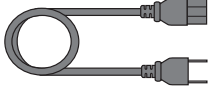
- (1) PreSonus Eris E3.5 passive studio monitor



- (1) 1.5m TRS 1/8" to 2 RCA cable
- (1) 1.5m TRS 1/8" stereo cable
- (1) 2m bare-wire speaker cable
- (8) Foam feet, (4) to be placed on the bottom of each speaker to improve isolation



- (1) Power cable

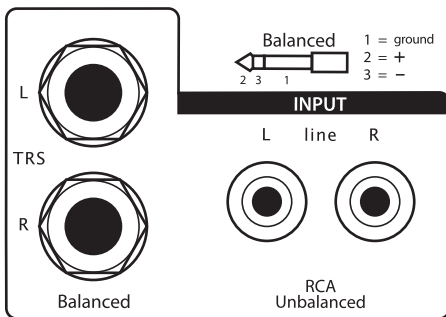


2. Hookup

2.1. Rear Panel Connections and Controls

Each Eris E3.5 pair consists of one active E3.5 and one passive E3.5. Nearly every connection is located exclusively on the active speaker. This speaker provides signal and power for the passive speaker. The exceptions are the bare-wire connectors, which send power and signal from the active speaker to the passive speaker.

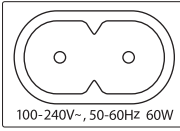
2.1.1. Inputs (Active Speaker)



Line-level Inputs. The Eris E3.5 active monitor provides a choice of two pairs of inputs: left and right balanced ¼" TRS and left and right unbalanced RCA. These inputs accept a line-level signal from an audio source and feed that signal to the each monitor's built-in power amplifier. These inputs are provided to enable flexible connectivity, not for connecting multiple sources to your speakers simultaneously.

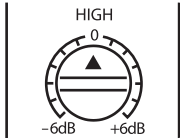
Power User Tip: *The left inputs (balanced or unbalanced) send signal to the amplifier that powers the active speaker; while the right inputs send signal to the amplifier that powers the passive speaker. Because of this, PreSonus recommends that the active speaker be placed on the left side of your mixing space, and the passive speaker be placed on the right. However, if you prefer to have the controls located on your active monitor placed on the right side of your workspace, be sure to reverse the inputs from your audio source to maintain the correct stereo image.*

2.1.2. Power (Active Speaker)



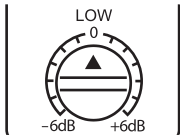
IEC Power Connection. The Eris E3.5 accepts a standard IEC C7 power cord. The power switch is located on the front panel of the active E3.5.

2.1.3. Acoustic Tuning Controls (Active Speaker)



High. Boosts or cuts all frequencies above 10 kHz by ± 6 dB.

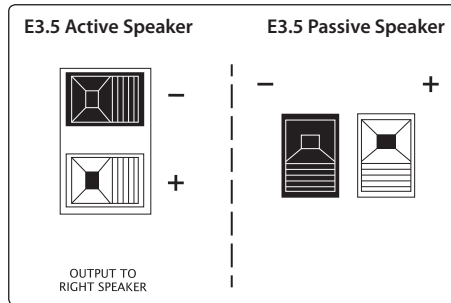
Power User Tip: The High control on the Eris E3.5 is a high-shelf EQ and attenuates or boosts frequencies above 10 kHz. This EQ is much like the treble control on a car stereo: It raises or lowers the gain on all frequencies above the specified cutoff frequency. Shelving EQs can make big changes to the sound very quickly by adding or removing an entire range of frequencies.



Low. Boosts or cuts frequencies around 100 Hz by ± 6 dB

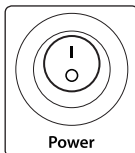
Power User Tip: The Low control is a low-shelf EQ and attenuates or boosts frequencies below 100 Hz. This functions much like the bass control on a car stereo: It raises or lowers the gain on all frequencies below the specified cutoff frequency. Shelving EQs can make bit changes to the sound very quickly by adding or removing an entire range of frequencies.

2.1.4. Speaker connections

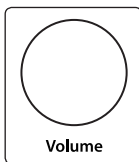


Bare-wire connectors. This connection is used to power and send signal to the passive E3.5. Be sure to connect the positive and negative connections on your active E3.5 to the positive and negative connections, respectively, on the passive E3.5 (i.e. connect positive to positive and negative to negative).

2.2. Active Speaker Front Panel



Power Switch. This is the On/Off switch. The LED above the volume control indicates power status.



Volume. Sets the volume level of the input signal before it is amplified. This is also the volume control for the front-panel headphone amp.



Aux In. This stereo 1/8" jack can be used to patch in an MP3 player for a quick reference check.

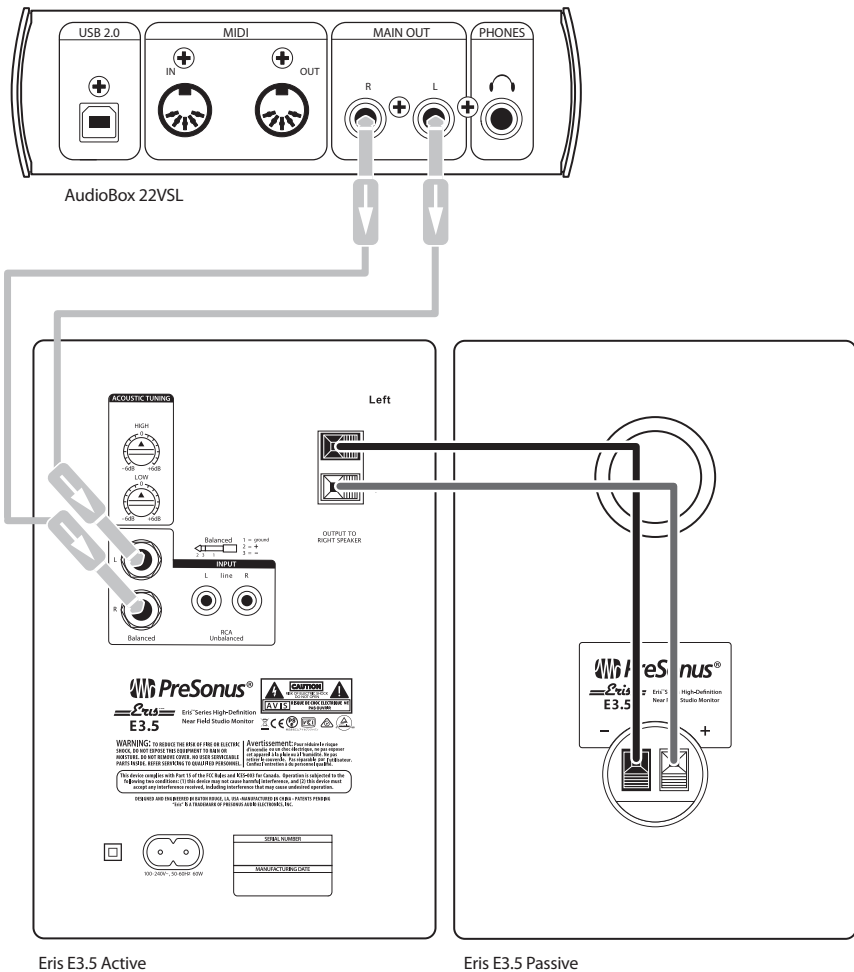
Power User Tip: This input will sum with the inputs on the back panel.



Headphone Out. This headphone output is controlled by the Level knob.

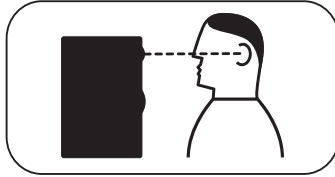
Power User Tip: When the headphone output is connected, audio will be muted to your E3.5 speakers. This can be very useful when you're recording at your desk!

2.3. Hookup Diagram

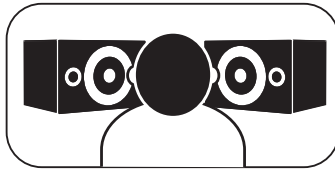


3.0 Tutorials

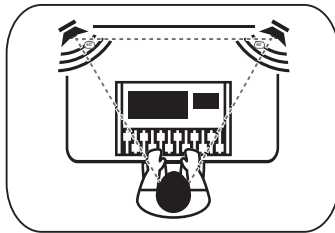
3.1 Monitor Placement



Ideally, near-field monitors should be placed so that the tweeters are at the same height as your ears when you are mixing.

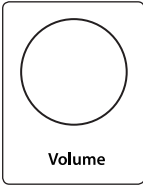


Eris speakers can be placed vertically or horizontally; when placed horizontally, they should form a mirror-image pair, with the tweeters on the outside.



The speakers should be separated so that the tweeters form an equilateral triangle with your head. The monitors should be “toed in,” or angled, so that they are pointed at you, not pointed straight ahead.

3.2 Level Setting

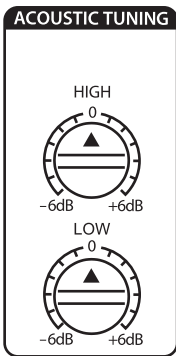


Make sure that the gain controls on your audio source have been optimized for maximum signal level and minimum noise. This process is called “gain staging,” and you can learn about it from many online sources. You should always set the volume on your Eris monitor so that all other level controls in the system needn’t be turned way up or way down to achieve a comfortable listening volume.

If you properly gain-stage your audio source, setting the Eris Volume to 12 o’clock or slightly lower should work fine.

Once the monitor’s volume control is set, leave it alone; don’t use it as a system-volume control. Leave that job to your audio device’s output-level control.

3.3 Equalizer Setting Suggestions



The Eris E3.5 provides both a high shelf and a low shelf EQ.

In general, setting the High control to 0 (no boost or cut) will produce the best results. However, if the sound is too bright or shrill, try turning this control down below 0; if the sound is too dull and lifeless, try turning it up above 0. It’s always better to cut than to boost and to use the smallest cut or boost needed to get the job done.

Like the High control, the Low control on the Eris E3.5 should generally be set at 0 (no boost or cut) to yield the best mixing results. However, if the sound is too bright or shrill, boosting this control will add more warmth. Conversely, if you find the sound too dark, lowering the level may help. Again, it is always better to cut than boost and to use the smallest adjustment needed to get the desired results.

Power User Tip: *Do not use the EQ controls on your Eris monitor to correct problems in your mix. While this changes what you hear in the control room, it has no effect on your recorded audio.*

4. Resources

4.1. Technical Specifications

Inputs

2 balanced ¼" TRS, 2 unbalanced RCA, 1 stereo 1/8"

Performance

Frequency Response	80 Hz to 20 kHz
Crossover Frequency	2.8 kHz
Amplifier Power	25W per speaker
Peak SPL at 1m	100 dB
Input Impedance	10 kΩ

User Controls

Volume Range	A-Type Taper
LF Control	Variable (-6 to +6 dB)
HF Control	Variable (-6 to +6 dB)
Protection	RF interference, output-current limiting, over-temperature, turn on/off transient, subsonic filter, external mains fuse

Power

100-120V ~50/60 Hz or 220-240V ~50/60 Hz

Physical

Cabinet	Vinyl laminated MDF
Dimensions (WxHxD)	5.6 x 8.3 x 6.4" (141 x 210 x 162 mm)
Weight (per pair)	6.4 lbs (2.9 kg)

4.2. Troubleshooting

No Power. First ensure that your active Eris E3.5 is plugged in. If it's connected to a power conditioner, verify that the power conditioner is turned on and functioning.

No audio. If your Eris E3.5 appears to power on but you hear no sound when playing audio from your audio source (the lights are on but nobody's home), first make sure that the cable connecting your audio source to the monitor is working correctly. Also, verify that the volume control is set to provide enough amplitude for the signal.

If only the passive E3.5 is not passing audio, check your speaker-wire connections and verify that the bare wire is fully inserted into each connection.

Hum. Usually, hum is caused by a ground loop. Verify that all audio equipment is connected to the same power source.

Sound is thin. If the sound of the speakers seems thin and brittle, check that your speaker wires are connected correctly (i.e., the positive/red connection on the active Eris E3.5 is connected to the positive/red connection on the passive Eris E3.5 and the negative/black connection on each is connected to the negative/black connection on the other).

4.3 Warranty Information

PreSonus's warranty obligations for this hardware product are limited to the terms set forth below:

How Consumer Law Relates To This Warranty:

THIS WARRANTY GIVES YOU SPECIFIC LEGAL RIGHTS, AND YOU MAY HAVE OTHER RIGHTS THAT VARY FROM STATE TO STATE (OR BY COUNTRY OR PROVINCE). OTHER THAN AS PERMITTED BY LAW, PRESONUS® DOES NOT EXCLUDE, LIMIT OR SUSPEND OTHER RIGHTS YOU MAY HAVE, INCLUDING THOSE THAT MAY ARISE FROM THE NONCONFORMITY OF A SALES CONTRACT. FOR A FULL UNDERSTANDING OF YOUR RIGHTS YOU SHOULD CONSULT THE LAWS OF YOUR COUNTRY PROVINCE OR STATE.

PreSonus Products And EU Statutory Warranty:

When you purchase PreSonus products, European Union consumer law provides statutory warranty rights in addition to the coverage you receive from the PreSonus limited warranty. A summary of the EU Statutory Warranty and the PreSonus Limited Warranty is below:

	EU Consumer Law	PreSonus Limited Warranty
Repair or Replacement Coverage For	Defects present when customer takes delivery	Defects arising after customer takes delivery
Warranty Period	2 years (minimum) from original date of purchase (unless superseded by PreSonus)	1 year from original date of purchase (unless superseded by PreSonus)
Cost of Coverage	Provided at no additional cost	Included at no additional cost
Who to contact to make a claim	The seller	PreSonus technical support for your region

What This Warranty Covers:

PreSonus Audio Electronics, Inc., (“PreSonus”) warrants defects in material and workmanship in PreSonus-branded products under normal use. This Limited Warranty applies only to hardware products manufactured by or for PreSonus that can be identified by the PreSonus trademark, trade name, or logo affixed to them.

Exclusions and Limitations:

This warranty does not cover the following:

1. Damage caused by accident, abuse, improper installation, failure to follow instructions in the applicable owner’s manual or improper operation, rental, product modification, alteration, or neglect.
2. Damage from improper grounding, faulty wiring (AC and signal), faulty equipment, or connection to a voltage range outside published specifications (see applicable owner’s manual).
3. Damage to drivers or diaphragm assemblies found to have burnt voice coils from over/under driving or signal surge from another device.
4. Damage occurring during shipment or improper handling.

5. Damage caused by repair or service performed by persons not authorized by PreSonus.
6. Products on which the serial number has been altered, defaced, or removed.
7. Products purchased from an unauthorized PreSonus dealer (products that have transferable warranties are excluded from this provision, provided the customer and the product are registered with PreSonus).

Who This Warranty Protects:

This Warranty protects only the original retail purchaser of the product (products that have transferable warranties are excluded from this provision provided the customer and the product are registered with PreSonus).

How Long This Warranty Lasts:

The Warranty begins on the original date of purchase from the retail purchaser, and the duration is as follows:

1-Year Limited Warranty		
Product Category	Model	Transferable
Recording Interfaces	AudioBox® iOne, AudioBox iTwo, AudioBox Stereo, AudioBox Studio, AudioBox USB, AudioBox VSL (1818, 44, 22), FireStudio™ Project, FireStudio Mobile, FireStudio Mobile Studio, Studio 192, Studio 192 Mobile	No
Preamplifiers	ADL600, ADL700, BlueTube DP V2, DigiMax D8, DigiMax DP88, Eureka, RC500, Studio Channel, TubePre V2	No
StudioLive® Mixers	16.0.2, 16.4.2AI, 24.4.2AI, 32.4.2AI, AR8, AR12, AR16, RM16AI, RM32AI	No
Monitoring & Controlling	Eris®, Central Station PLUS, FaderPort™, HP4, HP60, Monitor Station, Monitor Station V2, R-Series, Sceptre®, Temblor®	No
Accessories	Covers, Dolly, PRM1 mic, Sub Pole, breakout cables, power supplies, M10 Kit	No
3-Years Limited Warranty		
Product Category	Model	Transferable
Live Sound	StudioLive AI 328, 312, 315, 18S, ULT12, ULT15, ULT18, AIR10, AIR12, AIR15, AIR15S, AIR18S	Yes

What PreSonus Will Do:

PreSonus will repair or replace, at our sole and absolute option, products covered by this warranty at no charge for labor or materials. If the product must be shipped to PreSonus for warranty service, the customer must pay the initial shipping charges. PreSonus will pay the return shipping charges.

How to Get Warranty Service (USA):

1. You must have an active user account with PreSonus, and your hardware must be on file with your account. If you do not have an account, please go to: <http://www.presonus.com/registration> and complete the registration process.
2. Contact our Technical Support Department at (225) 216-7887 or log a support ticket at: <http://support.presonus.com>. TO AVOID THE POSSIBILITY OF SENDING IN A PRODUCT THAT DOES NOT HAVE A PROBLEM, ALL SERVICE REQUESTS SHALL BE CONFIRMED BY OUR TECH SUPPORT DEPARTMENT.
3. The return authorization number as well as shipping instructions shall be provided after your service request is reviewed and confirmed.
4. The product should be returned for service in the original product packaging. Products may be shipped in a manufactured "flight"- or "road"-style cases but PreSonus will NOT cover any shipping damage to these cases. Products that are not shipped in the original product package or a manufactured case may not receive a warranty repair, at PreSonus's sole discretion. Depending on the product model and the condition of your original packaging, your product may not be returned to you in the original packaging. The return shipping box may be a generic box that has been fitted for that model tested if the original gift box is not available.

How to Get Warranty Service (outside of USA):

1. You must have an active user account with PreSonus and your hardware must be on file with your account. If you do not have an account, please go to: <http://www.presonus.com/registration> and complete the registration process.

2. Contact the Technical Support/Service Department for your region at http://www.presonus.com/buy/international_distributors and follow procedures provided by your PreSonus contact.

Limitation of Implied Warranties:

ANY IMPLIED WARRANTIES, INCLUDING WARRANTIES OF MERCHANTABILITY AND FITNESS FOR A PARTICULAR PURPOSE, ARE LIMITED IN DURATION TO THE LENGTH OF THIS WARRANTY.

Some states, countries, or provinces do not allow limitations on how long an implied warranty lasts, so the above limitation may not apply to you.

Exclusion of Damages:

PRESONUS'S LIABILITY FOR ANY DEFECTIVE PRODUCT IS LIMITED TO THE REPAIR OR REPLACEMENT OF THE PRODUCT, AT PRESONUS'S SOLE OPTION. IF PRESONUS ELECTS TO REPLACE THE PRODUCT, THE REPLACEMENT MAY BE A RECONDITIONED UNIT. IN NO EVENT WILL PRESONUS BE LIABLE FOR DAMAGES BASED ON INCONVENIENCE, LOSS OF USE, LOST PROFITS, LOST SAVINGS, DAMAGE TO ANY OTHER EQUIPMENT OR OTHER ITEMS AT THE SITE OF USE, AND, TO THE EXTENT PERMITTED BY LAW, DAMAGES FOR PERSONAL INJURY, OR ANY OTHER DAMAGES WHETHER INCIDENTAL, CONSEQUENTIAL OR OTHERWISE, EVEN IF PRESONUS HAS BEEN ADVISED OF THE POSSIBILITY OF SUCH DAMAGES.

Some states, countries, or provinces do not allow limitations on how long an implied warranty lasts, so the above limitation may not apply to you.

If you have any questions about this warranty or service received, please contact PreSonus (USA) at +1 (225) 216-7887 or one of our authorized international distributors at: http://www.presonus.com/buy/international_distributors.

Product features, design, and specifications are subject to change without notice.

Added bonus: PreSonus' previously Top Secret recipe for... **Rice Dressing**

Ingredients:

- 1 lb ground beef
- 1 lb chopped chicken liver
- 1 onion (diced)
- 2 green peppers (diced)
- 4-6 celery stalks (diced)
- 2 garlic cloves (minced)
- ¼ C. chopped fresh parsley
- 3 C. chicken stock
- 6 C. cooked rice
- 1 Tbs. oil
- Salt and pepper to taste
- Cayenne pepper to taste

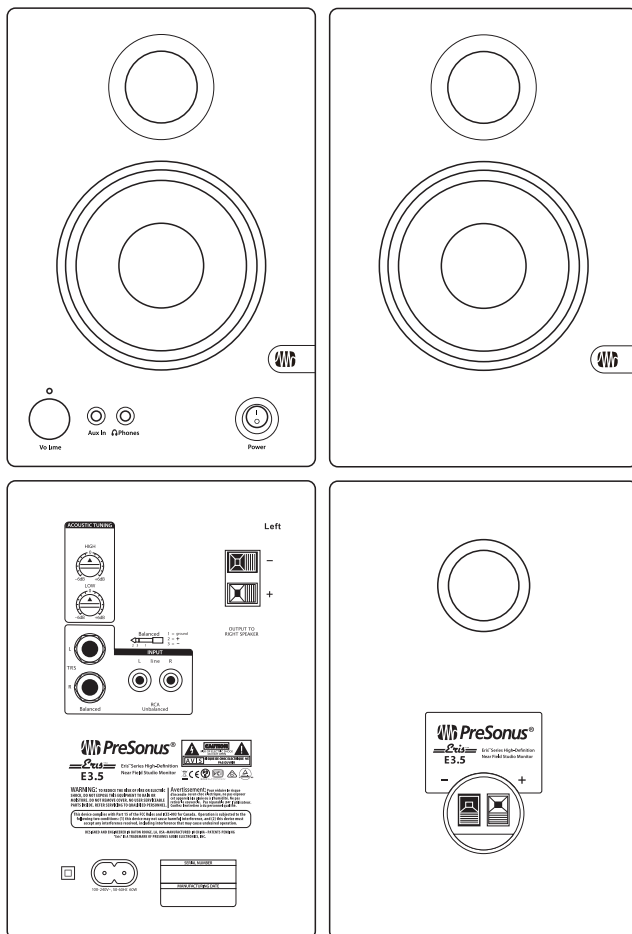
Cooking Instructions:

1. In a large pot, heat oil on medium high and add meat, salt, and pepper to taste. Stir until meat begins to brown.
2. Lower heat and add all vegetables. Cook until onions are transparent and celery is very tender. Add stock as necessary to prevent burning.
3. Stir in cooked rice. Add remaining stock and simmer on low until ready to serve.

Eris™ Series E3.5

High-Definition Near Field Studio Monitors

Owner's Manual



18011 Grand Bay Ct. • Baton Rouge,
Louisiana 70809 USA • 1-225-216-7887
www.presonus.com

Part#70-5200064-A